



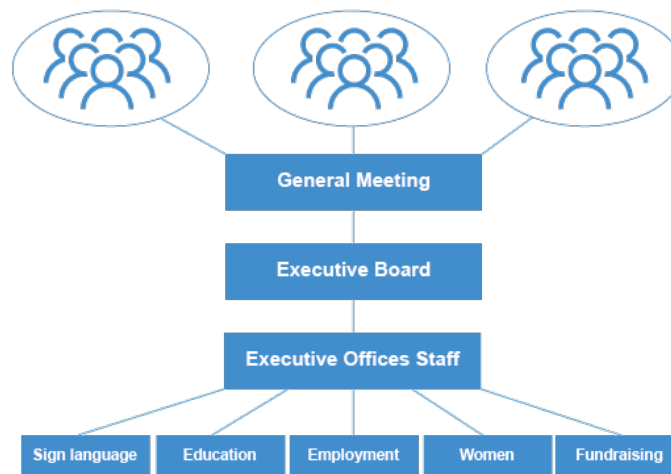
INTERNAL AND EXTERNAL STRUCTURE

CASE STUDIES

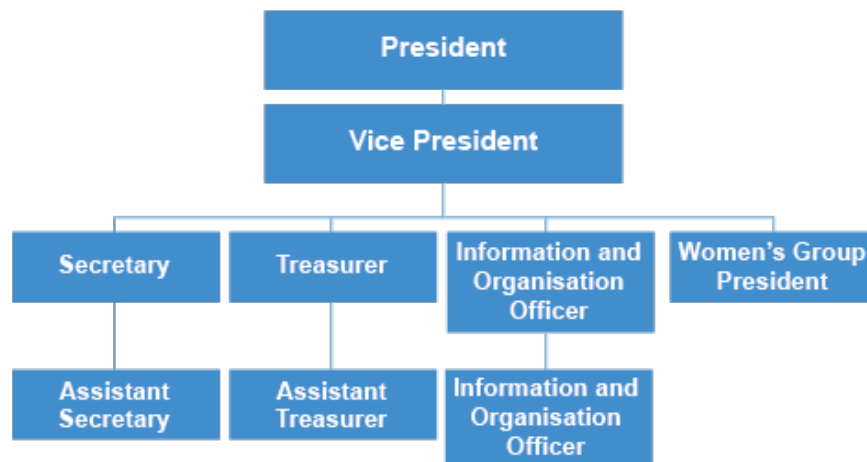
EXAMPLE MODELS OF INTERNAL STRUCTURE OF NATIONAL ASSOCIATION OF THE DEAF

Simple organisational structure

Deaf Clubs

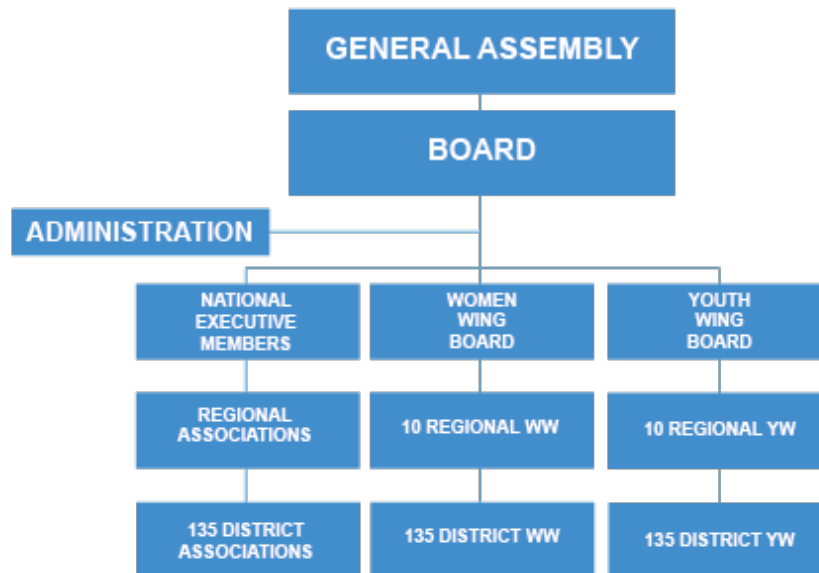


Typical association in Africa





Example of organisational structure: Ghana Association of the Deaf (GNAD)



GNAD General Assembly consists of 5 representatives from each of the 10 Regional Associations, 1 representative from Women’s Wing (WW), and 1 representative from Youth Wing (YW).

GNAD Board consists of 9 National Executives (president, vice-president, treasurer, etc.) elected at the General Assembly.

Women’s Wing and Youth Wing Boards are elected by Women’s Wing and Youth Wing General Assembly respectively (not depicted), which consists of 3 representatives from each regional WW/YW.

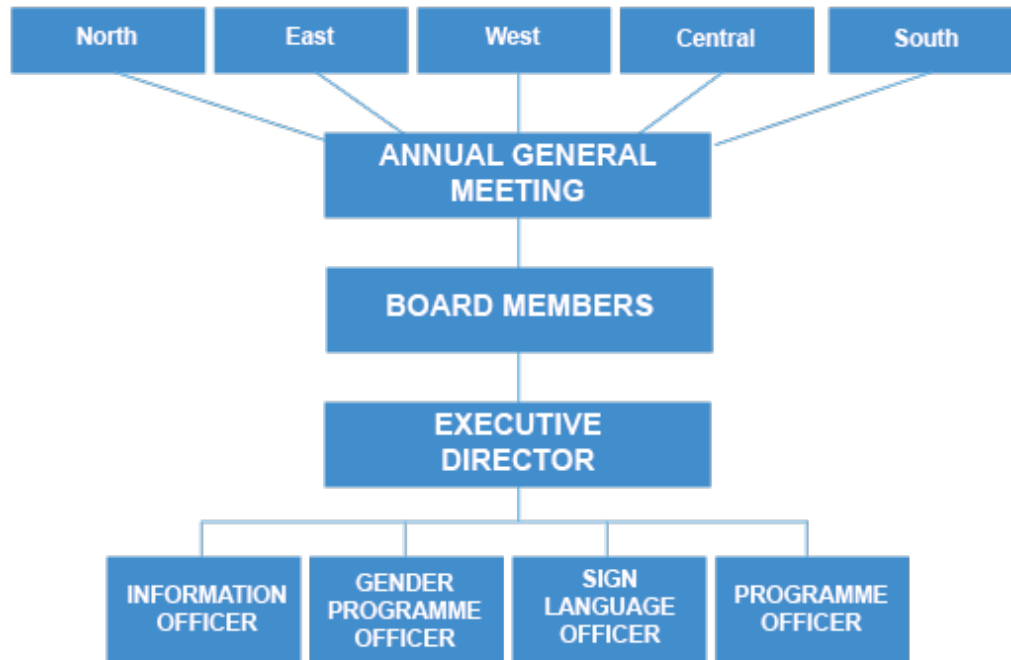
The boards in the Regional Associations and WW are elected by regional General Assemblies consisting of representatives from the district associations.

The Boards of YW & WW in the District Associations are elected by its membership at district General Assemblies.

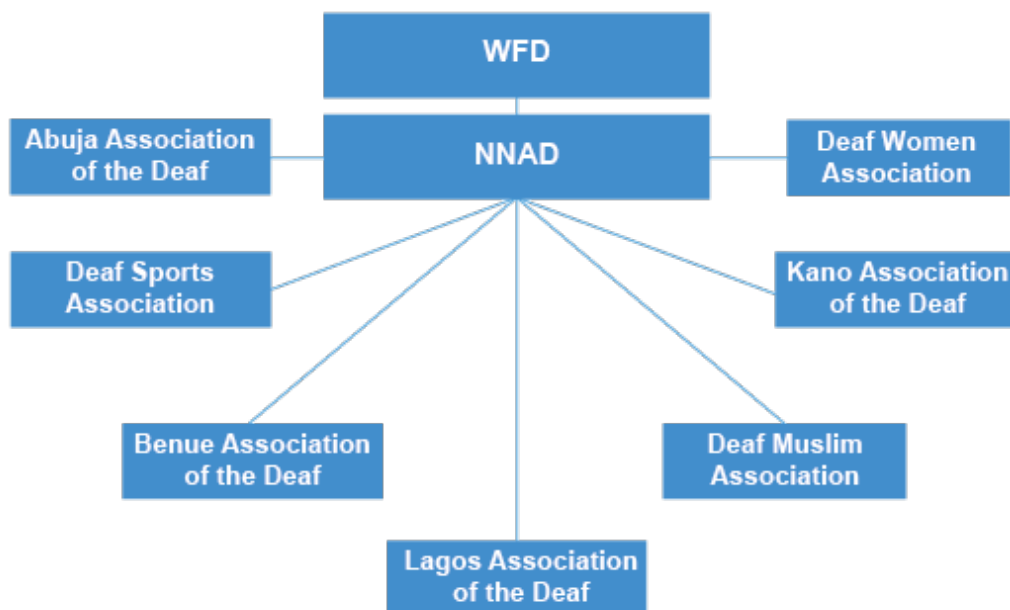
The GNAD board consists of 1. National President, 2. National Vice President, 3. National Secretary, 4. National Vice Secretary, 5. National Treasurer, 6. National Public Relations Officer, 7. National President, Women’s Wing, 8. National President, Youth Wing and 9. National President, Sports Wing.



Example of organisational structure: CHAVITA in Tanzania

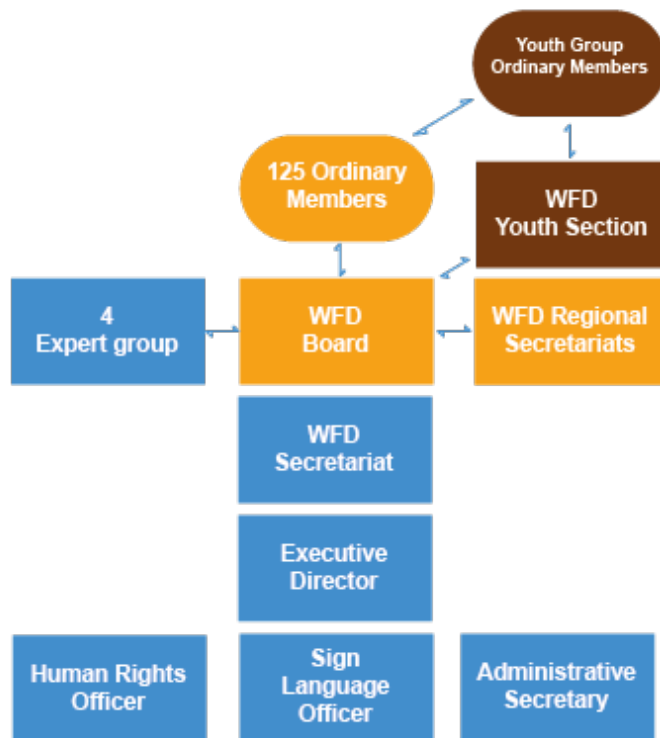


Example of organisational structure: Nigerian Association of the Deaf (NNAD)





Example of organizational structure: WFD Organizational Chart



EIGHT WFD REGIONAL SECRETARIATS





EXAMPLES OF EXTERNAL STRUCTURES OF DEAF ASSOCIATIONS OR ORGANISATIONS



RWANDA NATIONAL UNION OF THE DEAF, RNUD
External structure

